

February 22, 2007
Sumitomo Corporation

To whom it may concern,

Re : Personnel Changes in Board Members, Executive Officers and Corporate Officers

The personnel changes in Board Members, Executive Officers, Corporate Officers and the others from this April, have been resolved, at the ordinary meeting of the Board of Directors held today, as attached.

The personnel changes to be proposed at the Ordinary General Meeting of Shareholders scheduled for this coming June, will be resolved at a later date.

I. The personnel changes in Executive Officers (including Board Members)

- 1) Retirement from Executive Officers (As of March 31) : 2 persons
- 2) Newly Appointed Executive Officers (As of April 1) : 7 persons
- 3) Reappointment of Executive Officers (As of April 1) : 32 persons
- 4) Promotion in Executive Officers (As of April 1) : 8 persons
- 5) The Other Personnel Changes of Executive Officers (As of April 1)

II. The personnel changes in Corporate Officers

- 1) Newly Appointed Corporate Officers (As of April 1) : 15 persons
- 2) The Other Personnel Changes of Corporate Officers (As of April 1)

III. The personnel changes of the employees along with the above personnel changes in Board Members, Executive Officers and Corporate Officers (As of April 1)

IV. Organizational Change (As of April 1)

Reference materials:

- I. Executive Officers (As of April 1) : 39 persons

(Contact : Mitsuru Iba, General Manager,
Corporate Communications Department,03-5166-3089)

I . The personnel changes in Executive Officers (including Board Members)

1) Retirement from Executive Officers (As of March 31)

| Name | As of April 1 | Current |
|---------------|--|---|
| Shuji Hirose | Representative Director, Assistant to President and CEO | Representative Director, Executive Vice President, General Manager, Machinery & Electric Business Unit |
| Hisahiko Arai | Representative Director, Assistant to President and CEO | Representative Director, Senior Managing Executive Officer, General Manager, Materials & Real Estate Business Unit |

2) Newly Appointed Executive Officers (As of April 1)

| Name | As of April 1 | Current |
|-----------------|--|---|
| Takafumi Sone | Executive Officer, General Manager, Telecommunication, Environment & Industrial Infrastructure Business Division | Corporate Officer, General Manager, Infrastructure Business Division |
| Makoto Nakamura | Executive Officer, Assistant General Manager, Financial Resources Management Group, General Manager, Finance Dept. | Corporate Officer, General Manager, Finance Dept. |
| Naoki Hidaka | Executive Officer, General Manager, Metal Products for Automotive Industries Division, Sumisho Steel Corporation | Corporate Officer, General Manager, Metal Products for Automotive Industries Division, Sumisho Steel Corporation |
| Shigeru Ohashi | Executive Officer, General Manager, Lifestyle & Retail Business Division | Corporate Officer, General Manager, Lifestyle & Retail Business Division |

| Name | As of April 1 | Current |
|---------------|--|--|
| Yasuo Kumagai | Executive Officer, General Manager, Materials & Supplies Division | Corporate Officer, General Manager, Materials & Supplies Division |
| Masayuki Doi | Executive Officer, Assistant General Manager for Southeast & Southwest Asia, President of PT. Sumitomo Indonesia, General Manager, Surabaya Office, Executive Supervisor, Jakarta Project Coordination Office | Corporate Officer, Assistant General Manager for Southeast & Southwest Asia, President of PT. Sumitomo Indonesia, General Manager, Surabaya Office, Executive Supervisor, Jakarta Project Coordination Office |
| Toru Furihata | Executive Officer, General Manager, Mineral Resources Division No.2 | Corporate Officer, General Manager, Mineral Resources Division No.2 |

3) Reappointment of Executive Officers (As of April 1)

All Executive Officers, except for the 2 persons who will retire from Executive Officers on March 31, will be reappointed Executive Officers.

4) Promotion in Executive Officers (As of April 1)

| Name | As of April 1 | Current |
|------------------|--|---|
| Susumu Kato | Executive Vice President, General Manager for the Americas, Director & President of Sumitomo Corporation of America | Senior Managing Executive Officer, General Manager for the Americas, Director & President of Sumitomo Corporation of America |
| Makoto Shibahara | Representative Director, Senior Managing Executive Officer, General Manager, Financial & Logistics Business Unit | Representative Director, Managing Executive Officer, General Manager, Financial & Logistics Business Unit |

| Name | As of April 1 | Current |
|-------------------|---|--|
| Shuichi Mori | Senior Managing Executive Officer, General Manager for Europe, CEO of Sumitomo Corporation Europe Group, Director & President of Sumitomo Corporation Europe Holding Limited, Chairman, President & Director of Sumitomo Corporation Europe Plc | Managing Executive Officer, General Manager for Europe, CEO of Sumitomo Corporation Europe Group, Director & President of Sumitomo Corporation Europe Holding Limited, Chairman, President & Director of Sumitomo Corporation Europe Plc |
| Kazuo Ohmori | Representative Director, Senior Managing Executive Officer, General Manager, Transportation & Construction Systems Business Unit | Representative Director, Managing Executive Officer, General Manager, Transportation & Construction Systems Business Unit |
| Takahiro Moriyama | Managing Executive Officer, General Manager, Infrastructure Business Unit | Executive Officer, Assistant General Manager, Machinery & Electric Business Unit, General Manager, Power & Energy Project Division |
| Ichiro Miura | Managing Executive Officer, General Manager, Human Resources Development & Information Management Group | Executive Officer, General Manager, Human Resources Development & Information Management Group |
| Takashi Kano | Managing Executive Officer, General Manager, General Products & Real Estate Business Unit | Executive Officer, Assistant General Manager, Materials & Real Estate Business Unit |
| Kuniharu Nakamura | Managing Executive Officer, General Manager, Corporate Planning & Coordination Dept. | Executive Officer, General Manager, Corporate Planning & Coordination Dept. |

5) The Other Personnel Changes of Executive Officers (As of April 1)

| Name | As of April 1 | Current |
|--------------------|--|--|
| Yoshi Morimoto | Representative Director, Managing Executive Officer, General Manager, Kansai Regional Business Unit | Representative Director, Managing Executive Officer, General Manager, Consumer Goods & Service Business Unit |
| Shingo Yoshii | Representative Director, Managing Executive Officer, General Manager, Media, Network & Lifestyle Retail Business Unit | Representative Director, Managing Executive Officer, General Manager, Media, Electronics & Network Business Unit, General Manager, Media Division |
| Kentaro Ishimoto | Managing Executive Officer, Assistant General Manager, General Products & Real Estate Business Unit, General Manager, Food Business Division | Managing Executive Officer, Assistant General Manager, Consumer Goods & Service Business Unit, General Manager, Food Business Division |
| Shunichi Arai | Managing Executive Officer, Assistant General Manager, Metal Products Business Unit, General Manager, Planning & Administration Dept., Metal Products Business Unit | Managing Executive Officer, General Manager, Kansai Regional Business Unit |
| Yoshio Osawa | Executive Officer, General Manager, Media Division | Executive Officer, General Manager, Network Division |
| Yoshiyuki Matsuoka | Representative Director, Executive Officer, General Manager, Chemical & Electronics Business Unit | Representative Director, Executive Officer, General Manager, Chemical Business Unit |

II. The personnel changes in Corporate Officers

1) Newly Appointed Corporate Officers (As of April 1)

| Name | As of April 1 | Current |
|--------------------|--|--|
| Masanori Banno | Corporate Officer, Assistant to General Manager, Human Resources Development & Information Management Group, President of Sumitomo Shoji Research Institute, Inc. | Assistant to General Manager, Human Resources Development & Information Management Group, President of Sumitomo Shoji Research Institute, Inc. |
| Toshio Yoshimoto | Corporate Officer, President of Sumitomo Corporation Kyushu Co., Ltd., General Manager, Kyushu Okinawa Regional Business Unit | President of Sumitomo Corporation Kyushu Co., Ltd., General Manager, Kyushu Okinawa Regional Business Unit |
| Teruo Shuto | Corporate Officer, President of Sumitomo Corporation Tohoku Co., Ltd., General Manager, Tohoku Office | President of Sumitomo Corporation Tohoku Co., Ltd., General Manager, Tohoku Office |
| Masahiro Nakanishi | Corporate Officer, Deputy General Manager, Metal Products for Automotive Industries Division, Sumisho Steel Corporation | Deputy General Manager, Metal Products for Automotive Industries Division, Sumisho Steel Corporation |
| Yutaka Iwasaki | Corporate Officer, Assistant to General Manager, Automotive Division, No.1, Sumisho Auto Leasing Corporation | General Manager, Planning & Administration Dept., Transportation & Construction Systems Business Unit |
| Masayuki Tsubota | Corporate Officer, General Manager, Planning & Administration Dept., General Products & Real Estate Business Unit | General Manager, Planning & Administration Dept., Materials & Real Estate Business Unit |

| Name | As of April 1 | Current |
|-------------------|--|--|
| Nobuhiko Yuki | Corporate Officer, General Manager, Life Science Division | Deputy General Manager, Life Science Division, President of Summit Agro International Ltd. |
| Tadashi Kobayashi | Corporate Officer, General Manager, Energy Division | Assistant General Manager, Energy Division, General Manager, Petroleum Products Dept. |
| Kiyoshi Ogawa | Corporate Officer, General Manager, Legal Dept. | General Manager, Legal Dept. |
| Hiroaki Mizobuchi | Corporate Officer, Deputy General Manager, Telecommunication, Environment & Industrial Infrastructure Business Division, General Manager, Power Energy Solution Business Dept., President of Summit Energy Holdings Corporation | General Manager, Domestic Power Business Dept., Assistant to General Manager, Power & Energy Project Division, President of Summit Energy Holdings Corporation |
| Yoshihiro Fujiura | Corporate Officer, General Manager, Ship, Aerospace & Transportation Systems Division | General Manager, Machinery Power and Electronics Group in Sumitomo Corporation of America |
| Akira Satake | Corporate Officer, Assistant General Manager for Europe, General Manager, European Corporate Management Unit in Sumitomo Corporation Europe Group, Sumitomo Corporation Europe Plc | General Manager, European Corporate Management Unit in Sumitomo Corporation Europe Group, Sumitomo Corporation Europe Plc |
| Masao Sekiuchi | Corporate Officer, Deputy General Manager, Iron & Steel Division, No.3, General Manager, Stainless Steel Products Dept., Sumisho Steel Corporation | General Manager, Stainless Steel, Wire Rod & Special Steel Dept., Assistant to General Manager, Iron & Steel Division, No.3, Sumisho Steel Corporation |

| Name | As of April 1 | Current |
|-----------------|--|--|
| Masato Sugimori | Corporate Officer, General Manager, Planning & Administration Dept., Infrastructure Business Unit | General Manager, Planning & Administration Dept., Machinery & Electric Business Unit |
| Hiroyuki Takai | Corporate Officer, Deputy General Manager, Financial Service Division, General Manager, Asset Management Dept. | General Manager, Commodity Business Dept. |

2) The Other Personnel Changes in Corporate Officers (As of April 1)

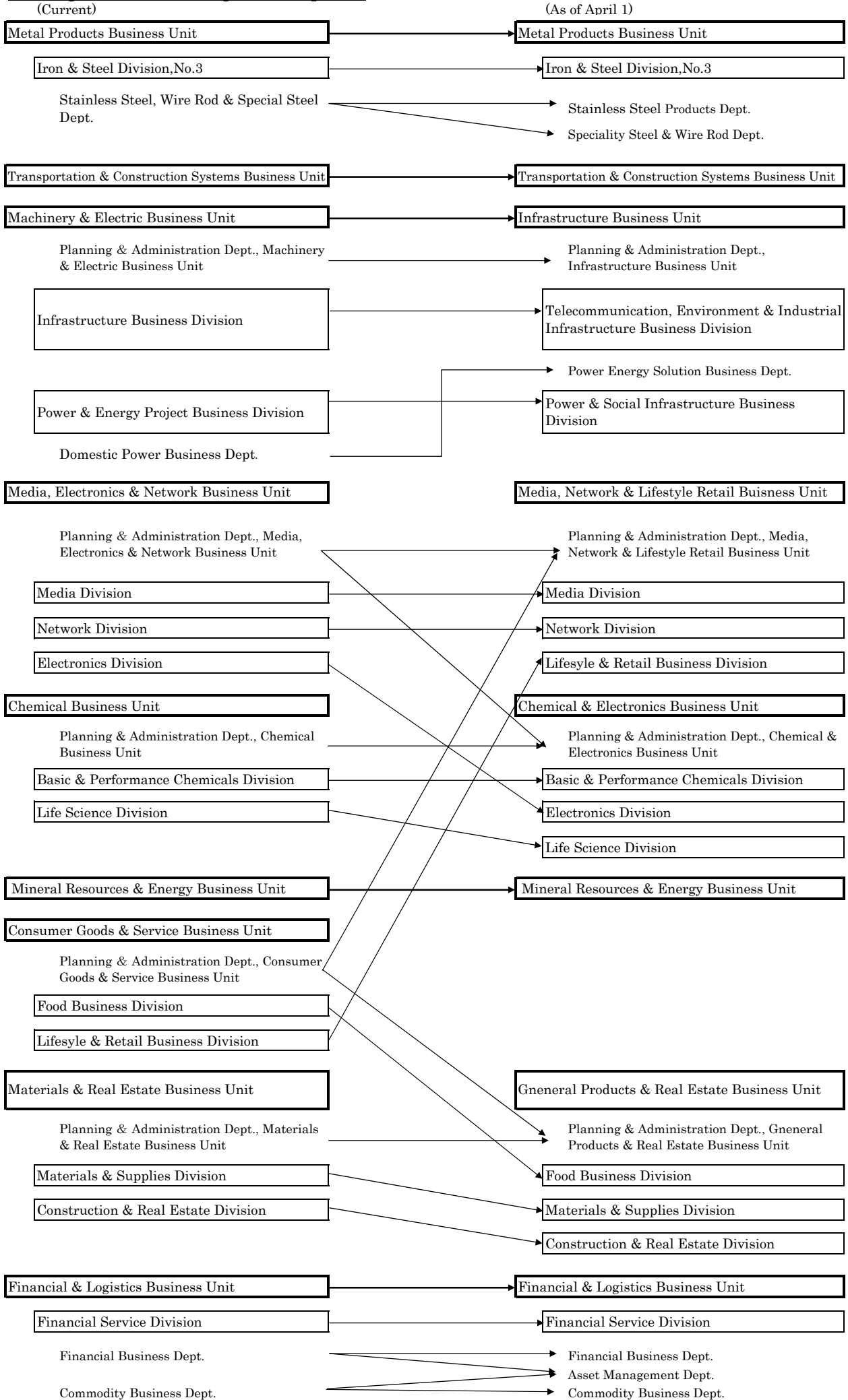
| Name | As of April 1 | Current |
|--------------------|--|--|
| Takayuki Kameoka | Corporate Officer, Assistant to General Manager, Non-Ferrous Products & Metals Division, Chairman of Summit Showa Aluminum Ltd. | Corporate Officer, General Manager, Planning & Administration Dept., Metal Products Business Unit |
| Yoshihiko Shimizu | Corporate Officer, Assistant to General Manager, Ship, Aerospace & Transportation Systems Division, Oshima Shipbuilding Co., Ltd. | Corporate Officer, General Manager, Ship, Aerospace & Transportation Systems Division |
| Minoru Uemura | Corporate Officer, Assistant to General Manager, Mineral Resources & Energy Business Unit | Corporate Officer, General Manager, Energy Division |
| Takahiro Yoshikawa | Corporate Officer, General Manager, Planning & Administration Dept., Chemical & Electronics Business Unit | Corporate Officer, General Manager, Life Science Division |

| Name | As of April 1 | Current |
|-------------------|---|--|
| Takeshi Sato | Corporate Officer, General Manager, Planning & Administration Dept., Transportation & Construction Systems Business Unit | Corporate Officer, General Manager, Planning & Administration Dept., Consumer Goods & Service Business Unit |
| Ryoji Araki | Corporate Officer, Assistant to General Manager, General Products & Real Estate Business Unit | Corporate Officer, Living Related Business Group in Sumitomo Corporation of America, TBC Corporation, Chairman & CEO of Treadways Corporation |
| Masatoshi Hayashi | Corporate Officer, General Manager, Planning & Administration Dept., Media, Network & Lifestyle Retail Business Unit | Corporate Officer, General Manager, Planning & Administration Dept., Media, Electronics & Network Business Unit |
| Shinya Matsuzawa | Corporate Officer, Assistant to General Manager, Chemical & Electronics Business Unit, Sumitomo Shoji Chemicals Co., Ltd. | Corporate Officer, General Manager, Planning & Administration Dept., Chemical Business Unit |
| Kohei Hirao | Corporate Officer, General Manager, Power & Social Infrastructure Business Division | Corporate Officer, Deputy General Manager, Power & Energy Project Division, General Manager, Power & Plant EPC Dept. No.2 |
| Akira Tsuyuguchi | Corporate Officer, General Manager, Network Division | Corporate Officer, Assistant to General Manager, Network Division, Sumisho Computer Systems Corporation |

III. The personnel changes of the employees along with the personnel changes in Board Members.
Executive Officers and Corporate Officers (As of April 1)

| Name | As of April 1 | Current |
|-------------------|---|---|
| Shigeki Aketa | General Manager, Speciality Steel & Wire Rod Dept., Sumisho Steel Corporation | General Manager, Kaohsiung Branch Office |
| Masato Ishida | General Manager, Construction Equipment Dept.No.3 | Assistant to General Manager, Construction & Mining Systems Division, President of Komatsu Canada, Ltd. |
| Junichi Yano | General Manager, Power & Plant EPC Dept.No.2 | Deputy General Manager, Power & Plant EPC Dept.No.2 |
| Yoshiaki Nakamura | General Manager, Petroleum Overseas Trading Dept., General Manager, Petroleum Products Dept. | General Manager, Petroleum Overseas Trading Dept. |
| Koichi Iwanaga | General Manager, Commodity Business Dept. | Assistant to General Manager, Commodity Business Dept. |
| Yoshimitsu Jingu | General Manager, Kaohsiung Branch Office | Assistant to General Manager, Steel Business Planning & Investment Dept.No.2, Assistant to General Manager, Steel Business Planning & Investment Dept.No.3, Assistant to General Manager, Metal Products for Automotive Industries Business Planning & Investment Dept., Sumisho Steel Corporation |
| Yutaka Sekine | General Manager, Machinery Power and Electronics Group in Sumitomo Corporation of America | General Manager, Construction Equipment Dept.No.3 |

IV. Organizational Change (As of April 1)



<Reference materials>

I. Executive Officers (As of April 1) : 39 persons

<○ : Representative Director>

| Position | Name | | |
|-----------------------------------|---------------------|--|---|
| President & CEO | Motoyuki Oka | | ○ |
| Executive Vice President | Kenzo Okubo | General Manager, Metal Products Business Unit | ○ |
| | Noriaki Shimazaki | Responsible for Human Resources Development & Information Management Group, Responsible for Financial Resources Management Group | ○ |
| | Nobuhide Nakaido | General Manager, Corporate Planning & Coordination Office | ○ |
| | Susumu Kato | General Manager for the Americas, Director & President of Sumitomo Corporation of America | |
| Senior Managing Executive Officer | Michio Ogimura | General Manager for Southeast & Southwest Asia | |
| | Michihisa Shinagawa | General Manager, Mineral Resources & Energy Business Unit | ○ |
| | Iwao Okamoto | Assistant General Manager, Corporate Planning & Coordination Office | |
| | Makoto Shibahara | General Manager, Financial & Logistics Business Unit | ○ |
| | Shuichi Mori | General Manager for Europe, CEO of Sumitomo Corporation Europe Group, Director & President of Sumitomo Corporation Europe Holding Limited, Chairman, President & Director of Sumitomo Corporation Europe Plc | |
| | Kazuo Ohmori | General Manager, Transportation & Construction Systems Business Unit | ○ |

| Position | Name | | |
|-------------------------------|-------------------|---|---|
| Managing Executive Officer | Yoshi Morimoto | General Manager, Kansai Regional Business Unit | ○ |
| | Shingo Yoshii | General Manager, Media, Network & Lifestyle Retail Business Unit | ○ |
| | Kentaro Ishimoto | Assistant General Manager, General Products & Real Estate Business Unit, General Manager, Food Business Division | |
| | Shunichi Arai | Assistant General Manager, Metal Products Business Unit, General Manager, Planning & Administration Dept., Metal Products Business Unit | |
| | Nobuo Kitagawa | General Manager for China, CEO of Sumitomo Corporation China Group, General Manager, Beijing Office, President of Sumitomo Corporation (China) Holding Ltd., President of Sumitomo Corporation (China) Ltd. | |
| | Yoshihiko Shimazu | General Manager for CIS, Assistant General Manager for Europe, General Manager, Moscow Office | |
| | Kenji Kajiwara | General Manager, Chubu Regional Business Unit | |
| | Makoto Sato | Assistant General Manager, Transportation & Construction Systems Business Unit, General Manager, Automotive Division No.1 | |
| | Toyosaku Hamada | General Manager, Financial Resources Management Group | |

| Position | Name | | |
|-------------------|--------------------|---|---|
| | Takahiro Moriyama | General Manager, Infrastructure Business Unit | |
| | Ichiro Miura | General Manager, Human Resources Development & Information Management Group | |
| | Takashi Kano | General Manager, General Products & Real Estate Business Unit | |
| | Kuniharu Nakamura | General Manager, Corporate Planning & Coordination Dept. | |
| Executive Officer | Shinichi Sasaki | Deputy General Manager for China, Sumitomo Corporation China Group CEO Officer, General Manager, China Metal Products Business Unit, and Corporate Group of East China in Sumitomo Corporation China Group, President of Sumitomo Corporation (Shanghai) Ltd. General Manager, Nanjing Office | |
| | Takuro Kawahara | Responsible for Internal Auditing Dept., Assistant General Manager, Corporate Planning & Coordination Office <in charge of Legal Affairs> | |
| | Yoshio Osawa | General Manager, Media Division | |
| | Yoshiyuki Matsuoka | General Manager, Chemical & Electronics Business Unit | ○ |
| | Mitsuhiko Yamada | General Manager, Mineral Resources Division No.1 | |
| | Kazuhisa Togashi | General Manager, Iron & Steel Division, No.2, President of Sumisho Steel Corporation | |
| | Kazuhiro Takeuchi | General Manager, Financial Service Division | |
| | Shinichi Ishida | General Manager, Construction & Mining Systems Division | |

| Position | Name | | |
|----------|-----------------|--|--|
| | Takafumi Sone | General Manager, Telecommunication, Environment & Industrial Infrastructure Business Division | |
| | Makoto Nakamura | Assistant General Manager, Financial Resources Management Group, General Manager, Finance Dept. | |
| | Naoki Hidaka | General Manager, Metal Products for Automotive Industries Division, Sumisho Steel Corporation | |
| | Shigeru Ohashi | General Manager, Lifestyle & Retail Business Division | |
| | Yasuo Kumagai | General Manager, Materials & Supplies Division | |
| | Masayuki Doi | Assistant General Manager for Southeast & Southwest Asia, President of PT. Sumitomo Indonesia, General Manager, Surabaya Office, Executive Supervisor, Jakarta Project Coordination Office | |
| | Toru Furihata | General Manager, Mineral Resources Division No.2 | |